

# **CONICUBE®**

## **BUILD UP AND DISCHARGE INSTRUCTIONS**



**Please handle this liquid unit with care and follow these instructions carefully to avoid damage and leaking**

### **FACTS:**

**Content : max 950 litres**

**Outside dimensions : 1130 x 1130 x 950 mm**

**Compression strength : 20.000 kg**

**Stacking : 2:1 static / 1:1 dynamic**

**Transport : 20 units fit in a 20" sea container**

More info:  
[www.conicube.com](http://www.conicube.com)



**C.I. PRODUCTS BV**

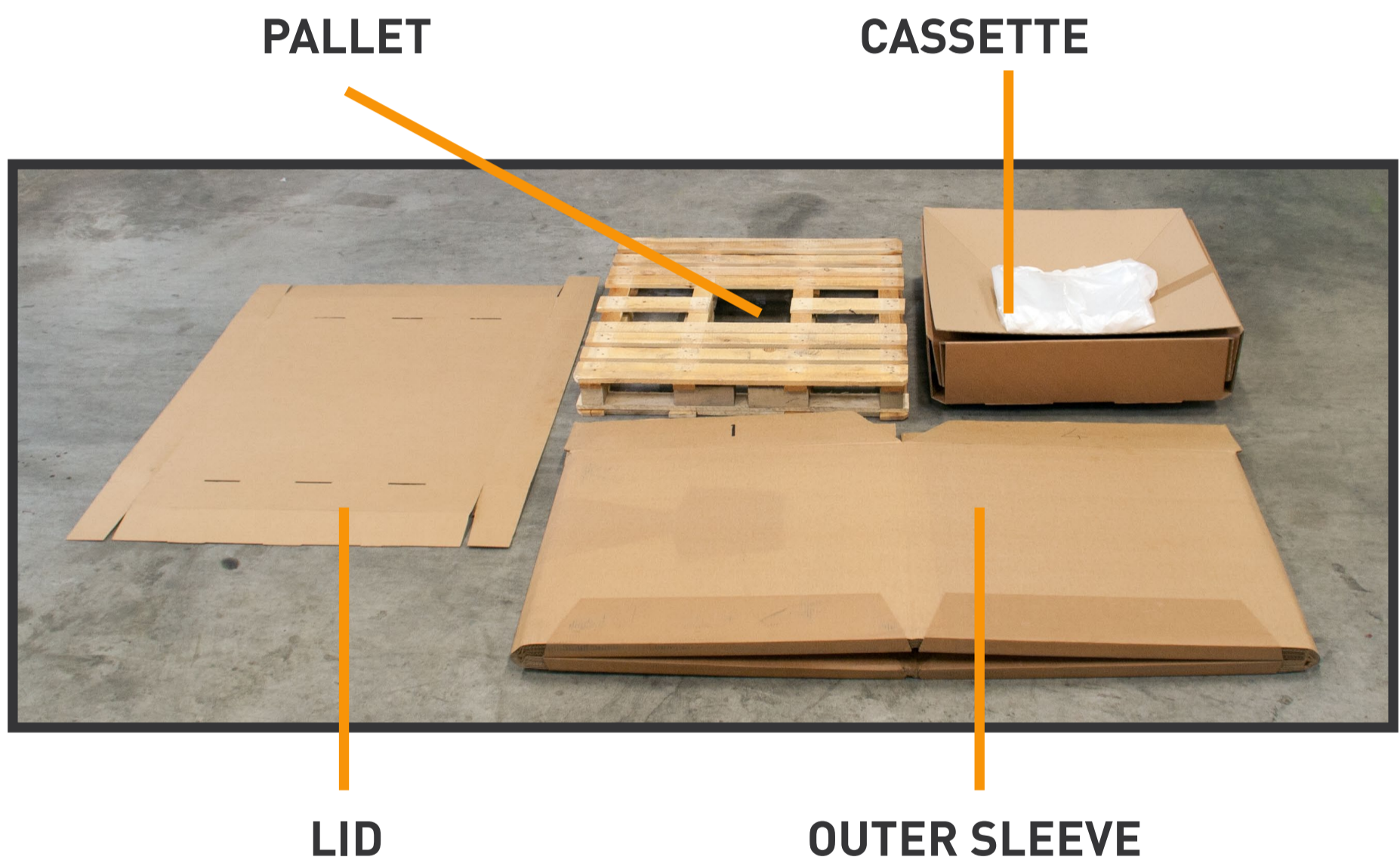
LIQUID SHIPPING SOLUTIONS

# CONICUBE®

## BUILD UP INSTRUCTIONS

The unit arrives flat packed; 16 outer sleeves on one pallet, 8 built up cassettes with liners on a separate pallet, 22 loose pallets, type CP 8 special, 1140x1140 mm with a central hole for discharge through the bottom and the lids, which are on a separate pallet.

The manual shows step by step: how to inspect the unit and what needs to be done to ensure a safe and easy build up.



### THE CASSETTE HOLDS THE FOLLOWING PARTS:

1. A corrugated cassette with conical bottom.
2. A 1000 liter liner with integrated 6" valve for discharging the liquid product.
3. The CI Products valve protection and positioning plate (VPP plate), placed on the outside of the cassette and connected to the valve on the inside of the cassette, which will ensure that the cassette is placed well on the pallet and the valve is protected against damage.

**NEXT PAGE, BUILD UP STEPS →**

**1.** Take one of the CP8 special pallets and place it near to where you want to assemble the unit.

**2.** Take one of the sleeves, put it upright and place one side against a heavy object or a wall. Or open as shown on the photo.

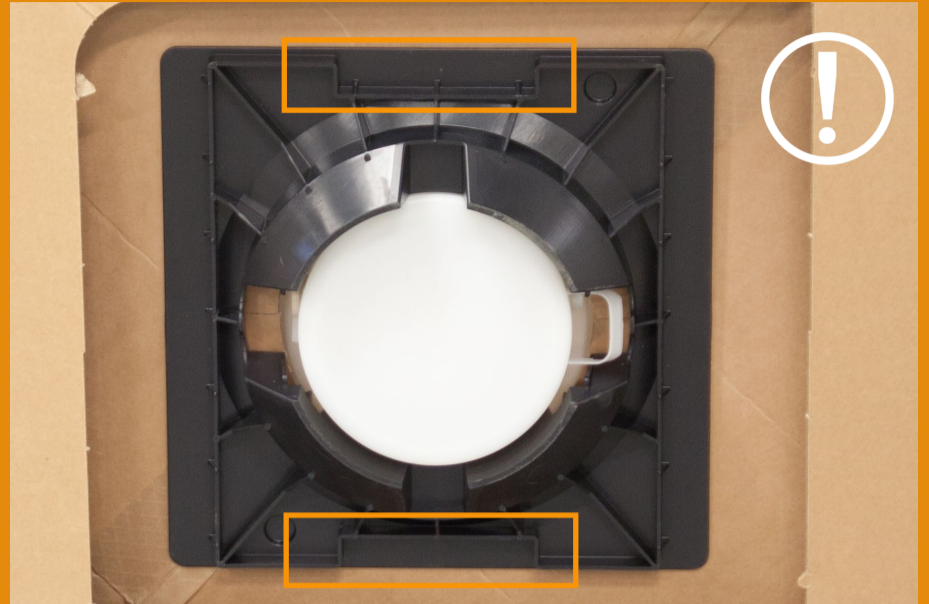
**3.** Open the sleeve slightly in the middle to overcome the dead point and then push it, so that it opens and becomes more or less square. If operated by one person, try to keep the unit in that square position, so the cassette can be placed inside.

**4.** Because the unit has been laying flat for a while, it wants to go back in this flat position. If a dedicated built-up location is appointed, a little 90 degree corner piece can be bolted in the floor behind which the square unit can be placed behind and it will stay in its square position. Or alternatively, a pallet on the place where the man in the photo holds his foot, does the job and holds it square.

**5.** When the unit is square, drop in the cassette with the bag. In order to make it easier to reach the bag afterwards for filling, unscrew the dust cap from the top of the bag, to let a bit of air in and pull the bag softly upward, so that the bag is already easier to reach. Do not pull too hard, which may cause the valve to unlock from the VPP plate in the bottom.



**6.** Make sure that the openings in the black VPP plate under the cassette are in line with the two top deck shelves of the pallet. There are two correct and two wrong positions. If it is placed wrongly, the valve cannot be opened, because the valve is then not located deep enough in the pallet and the opening key cannot enter the valve spindle.



**7.** Place the unit with cassette on the pallet and make sure the open spaces in the positioning plate fall directly in the top shelves in the center of the pallet. The unit will then always be positioned correctly on the pallet.



**8.** Fold the four top flaps of the unit in the sequence as written on them, 1..2..3..4., inwards and fold number 4 under number 1, by bending 1 and 4 a bit upwards and then stick 1 under 4. The flaps will now stay in place.

**9.** Pull the white corner ropes through the corners of the unit, where the top flaps meet and hang them on the outside of the unit.



**10.** Bring 2 straps through the pallet, and then over the top flaps of the unit. The location of the straps is indicated on the unit. Straps are both placed in the same direction.



**11.** Tie the small white corner ropes located at the corners of the bag (pulled out in step 9) to the two straps that have just been placed on the unit. This holds the bag up so it is easier to fill, and later the receiver will be ensured this way that the bag cannot fall down on the valve during discharge and block the discharge opening.



**Do not start filling before the two first straps have been placed: the unit will bulge and cannot be corrected after being filled!**

**THE UNIT IS NOW READY TO FILL.**

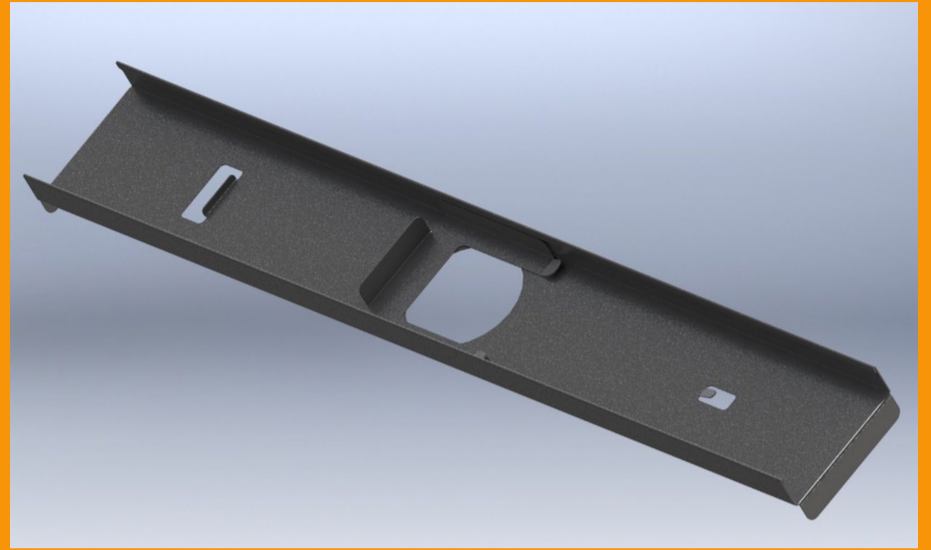


**NEXT PAGE, FILLING INSTRUCTIONS →**

# FILLING INSTRUCTIONS

**CONICUBE®**

**1.** Check after the first 100-150 liters if the bag is nice and loose in the unit and has enough space to be filled to the top. Adjust the bag a bit if necessary. If desired, a filling bridge (on the photo) can be used, which will hold the filling spout up for filling.



**2.** Fill until top of unit with desired contents. MAX 950 LITERS



**3.** When full, place the cap back on the filling opening. Remove the filling bridge, if that has been used.



**4.** Place the lid on the unit and place two straps in the same way as the first two, but in the opposite direction and this time not directly over the flaps, but over the lid, the place is indicated on the lid.

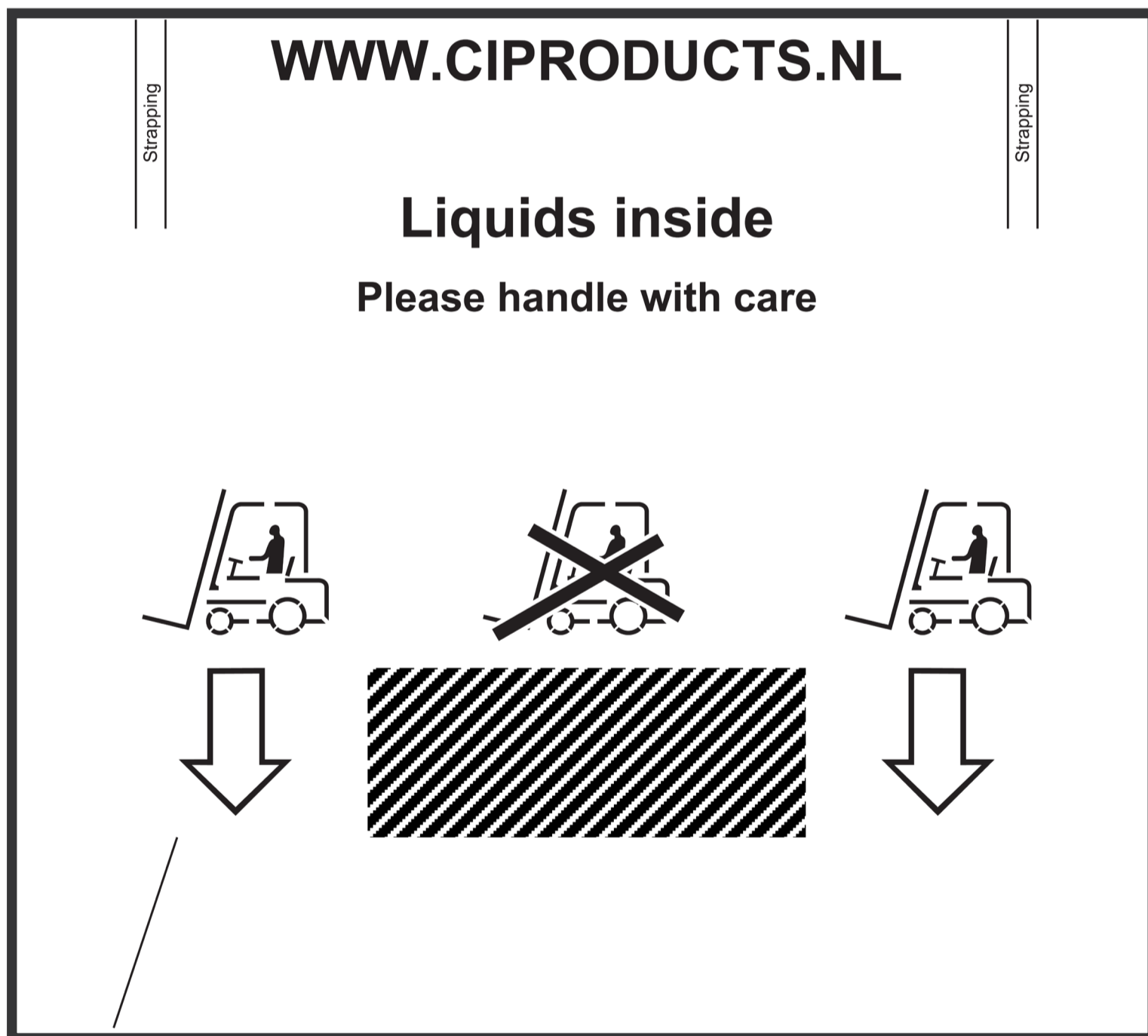
**THE UNIT IS NOW  
READY TO SHIP.**



# CONICUBE®

## REMARK:

The unit is clearly marked with indications as “liquid unit” and the correct as well as incorrect entry points for a forklift truck or other means of internal transport. Also the valve is protected by the CI Products valve positioning plate (VPP plate) against pallet entering internal handling systems. Make sure that these indicated instructions are followed, or serious damage can be caused to the bottom discharge valve and the unit may leak.



**IF ANY QUESTIONS ARE LEFT, CONTACT US VIA YOUR SUPERVISOR: WE WILL ALWAYS BE AVAILABLE FOR FURTHER ASSISTANCE.**

# CONICUBE®

## DISCHARGE INSTRUCTIONS



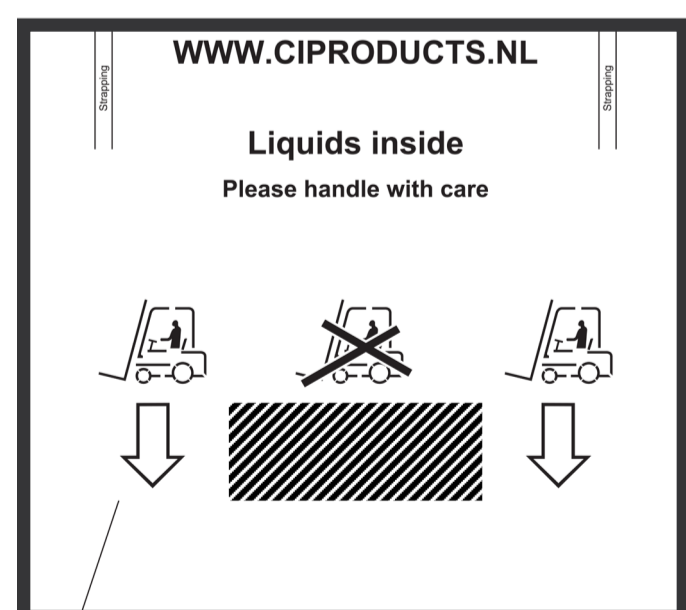
Please handle this liquid unit with care and follow these instructions carefully to avoid damage and leaking

This manual is meant for customers, who receive filled Conicubes, in order to handle the unit in the right way, to prepare the unit for discharge in an easy way and to empty the unit completely. The manual shows step by step: how to inspect the unit and what needs to be done to ensure a safe and easy discharge.

The unit arrives with approximately 1000 liters of liquid product. The product is kept in a bag inside the unit, which is fitted with a filling opening at the top and a discharge opening at the bottom of the unit.



Follow the instructions on the unit, especially regarding where the forklift truck can and cannot enter the pallet. This is important to avoid damage to the discharge valve underneath the unit by the forks of the truck.



NEXT PAGE, DISCHARGE STEPS →

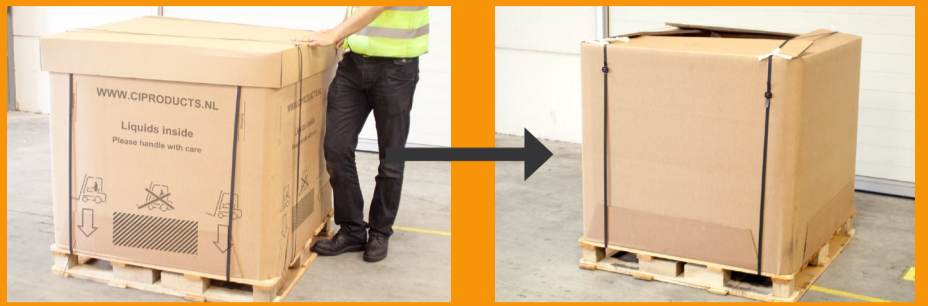


**1.** On top of the unit is a lid, which is fitted with two straps to hold the unit on the pallet and the lid in place.

Remove these two straps and take off the lid.

Leave the other two straps, which are placed over the top flaps of the unit, as well as the white corner tie ropes, in place. These will prevent the bag from falling down during discharge and blocking the valve.

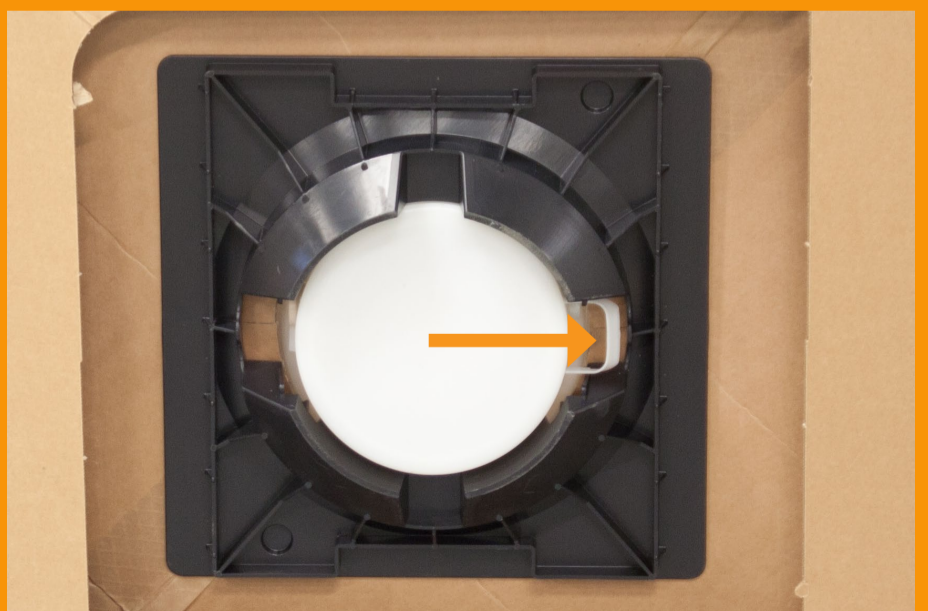
The bag can now be inspected on the top and should be full. You do not need to remove the filling dust cap, since the bag is flexible, it will not pull any vacuum during discharge.



**2.** Lift the unit and quickly inspect the bottom, especially the discharge valve in the middle.



**3.** Remove the white dust cap by pulling the grip down. The dust cap will come off and the closed valve will be visible.



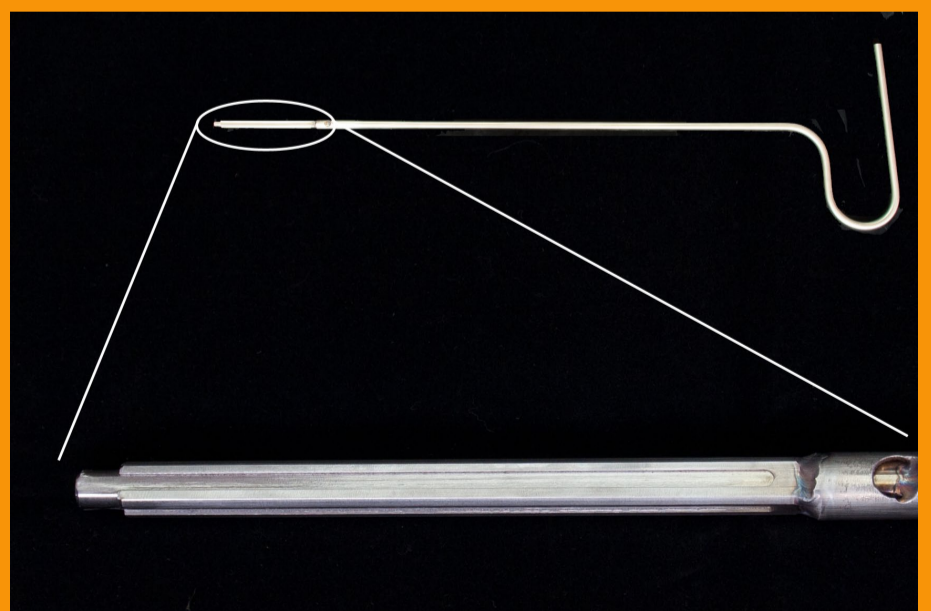
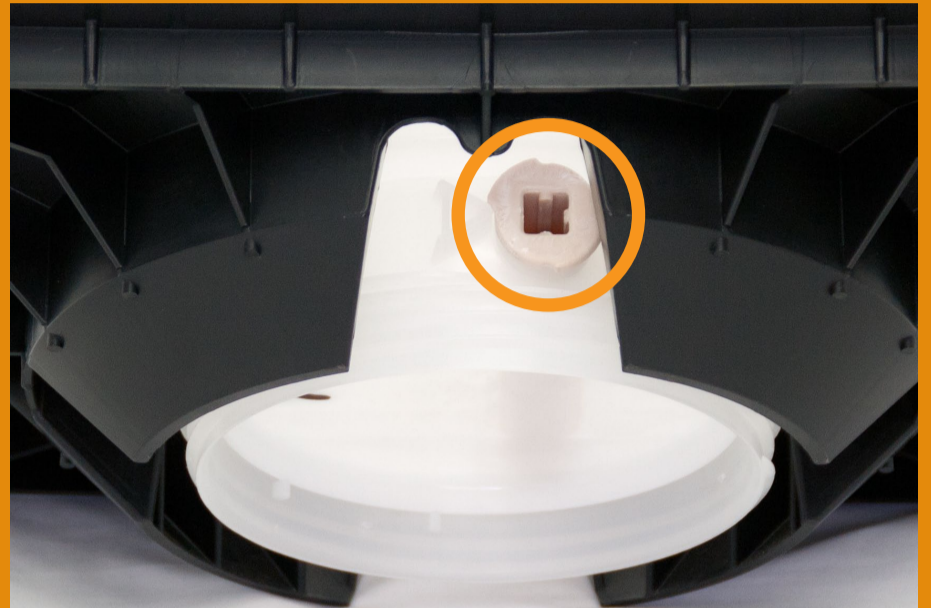
**CONTINUE ON THE NEXT PAGE →**

**4.** Place the unit on a stand to connect hoses or pipes with couplings, or place it on the platform of a “mother tank” into which the unit will be discharged.

**5.** Make sure that the unit is placed in such a way that the spindle opening of the valve faces you, so the key (see next point) can be inserted into the hollow spindle. As you will see, this hole is in line with the gap between the two middle blocks of the pallet. You can operate the valve from the outside of the pallet, so no handling under the unit is required for safety reasons.

**6.** With the first shipment of the Conicube, you will receive a long key, which operates the valve. This special key has four equal, special shaped sides. Align this key with the inside profile of the spindle of the valve. Insert the key in the spindle until it reaches the end of the hole.

**THE UNIT IS NOW  
READY TO DISCHARGE.**



**CONTINUE ON THE NEXT PAGE →**

**7.** Open the valve by turning the key clockwise, (to the right), and product will start to flow. Do not turn more than a quarter of a turn. That will open the valve completely in a vertical position for full flow. At any moment the valve can be closed again by turning the key back into its original position. A firm “click” can be heard and felt when it locks back in its seat. The product flow will stop.

**8.** The speed of the discharge depends on the viscosity of the product. The unit will empty completely and very little product is left in the unit. If desired the last bit can always be squeezed out later, when the bag has been removed from the unit.

## **EMPTY:**

**9.** When the unit is empty, close the valve by turning the key anti-clockwise (to the left) for a quarter of a turn, until the valve clicks back in its closed position.

**11.** Cut the corner tie ropes and the two straps.

**13.** If desired the last little bit of product that ‘sits’ on the walls of the bag can be squeezed out by hand.



**10.** Wipe off some last drops that may hang on the valve and lift the unit of its stand or platform.

**12.** Pull the bag up firmly which will unlock its position in the CI Products VPP (valve protection and positioning) plate.

**14.** Lay the unit on its side and remove the cassette. The unit will then fold flat by itself.

**THANK YOU FOR USING THE CONICUBE  
WWW.CONICUBE.COM - BY C.I. PRODUCTS.**